



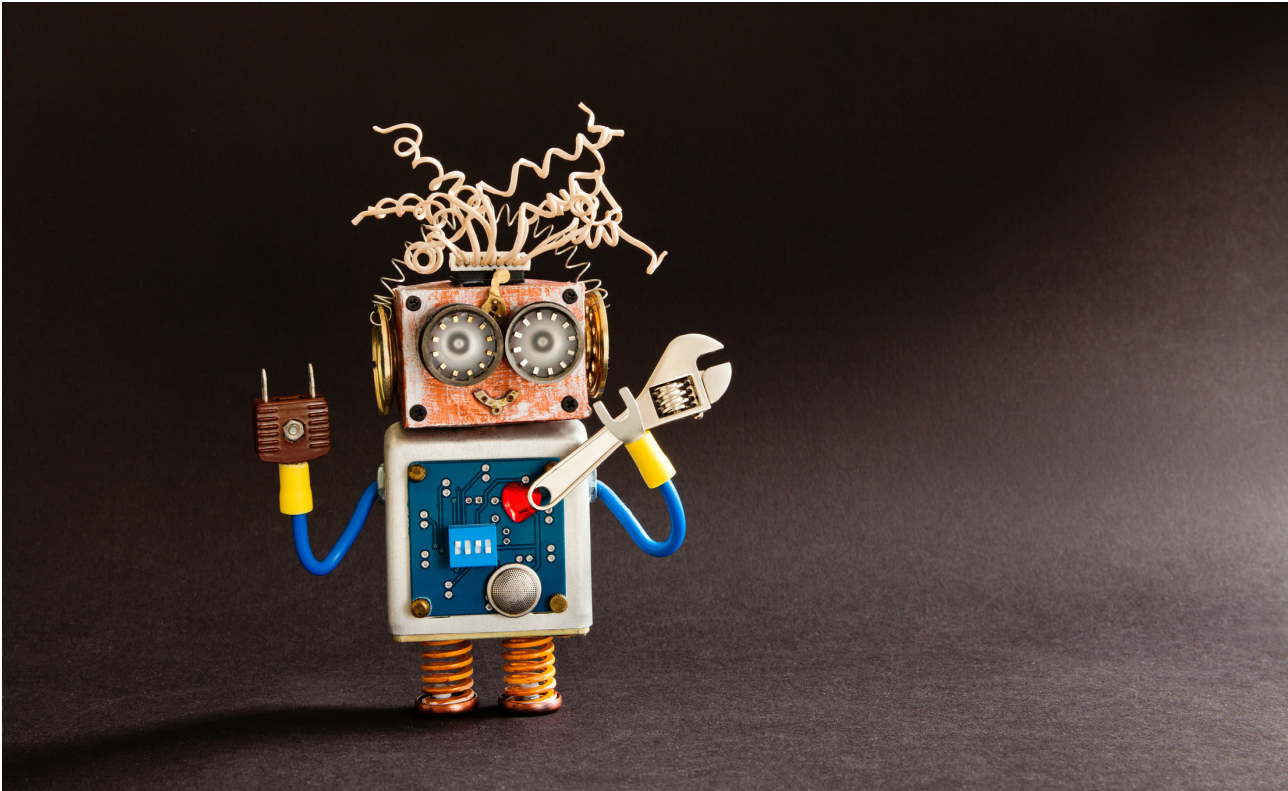
The ultimate guide to replacing Farnell, Gould or Advance power supplies



Advance Product Services Ltd
Unit 30, Freemans Way, Harrogate, HG3 1DH, UK.

Office: +44 (0)1423 812 980
www.advanceproductservices.co.uk

Contents	Page
The problem	03
The replacement solution	03
How to order your replacement power supply	03
Farnell -> APS Range and model compatibility cross reference chart	04
Advance / Gould -> APS Range and model compatibility cross reference chart	06
Other manufacturers -> APS model compatibility cross reference chart	11
Replacement power supplies - Frequently Asked Questions.....	12
About us	14



If your equipment is powered by an obsolete Farnell, Gould or Advance power supply which is now proving unreliable, or you are worried that it might do soon, APS have a solution for you.

The problem

Your system was designed and built many years ago. It runs on a Farnell, Gould or Advance power supply and has worked reliably for some considerable time now, but it is old and you have a nagging doubt that this calm will not go on for ever. Last time it failed you paid £££ to fix it, but the repercussions caused by the downtime were far worse! You have looked around for potential replacements and it's not that simple; electrical specifications, connections, sizes, control signals etc ... You just can't find anything to fit the bill.

The Replacement Solution

We thought ... 'Wouldn't it be a great idea if somebody designed and built a new version of the old supplies, made them physically the same size, with the same connections, electrical specifications and control signals?'

We set about to do just that, and now have a huge range of form-fit-function identical supplies available to order.

To make things even simpler for you, we have now put together this easy-to-understand guide with a Farnell/Gould/Advance range and APS model number cross reference.

How to order your replacement power supply

First find your replacement PSU. Look through the compatibility charts starting on the following page which list the old Farnell/Gould/Advance model numbers against their new APS replacement.

Contact me in any way you like, to confirm your exact requirements.

John Dyson
Advance Product Services Ltd

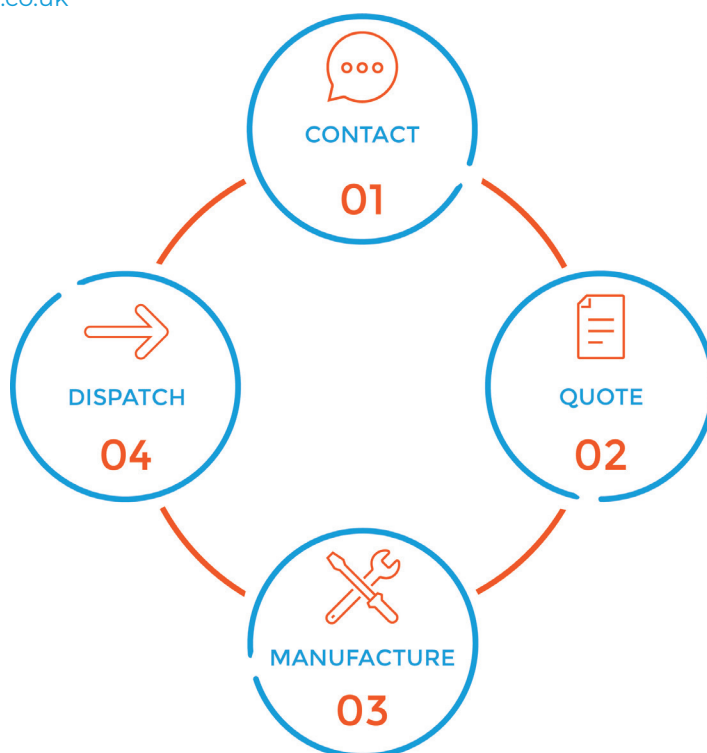
Unit 30, Freemans Way
Harrogate, HG3 1DH, UK.
Direct: +44 (0)1423 623 646
Mobile: +44 (0)7742 419 455
Office: +44 (0)1423 812 980
mailto:john.dyson@advanceproductservices.co.uk
<https://advanceproductservices.co.uk>

We will quote a fixed price in GBP £ for your new power supply, including lead times, carriage charges and customs/ shipping arrangements if applicable. We will also talk to you about how you would like to pay.

Next, our Engineers will assemble, configure and fully test your unit.

We will carefully pack and dispatch your new power supply to you.

Then you can plug it in where the old one came from, sit down and relax!



Farnell -> APS Range and model compatibility cross reference charts

Farnell Range	Farnell model number	APS equivalent model number	APS Range
Farnell G 30W range			APS MAM0030 range
	G12-2.5M	MAM0030W12V	
	G15-2M	MAM0030W15V	
	G24-1.4M	MAM0030W24V	
Farnell G 60W range			APS MAM0060 range
	G6-10S	MAM0060W05V	
	G12-5S	MAM0060W12V	
	G15-4S	MAM0060W15V	
	G24-2.5S	MAM0060W24V	
Farnell G 120W range			APS MAM0120 range
	G6-20S	MAM0120W05V	
	G12-10S	MAM0120W12V	
	G15-8S	MAM0120W15V	
	G24-5S	MAM0120W24V	
Farnell G 240W range			APS MAM0240 range
	G6-40A	MAM0240W05V	
	G12-20A	MAM0240W12V	
	G24-10A	MAM0240W24V	
	G48-5A	MAM0240W48V	
Farnell G 360W range			APS MAM0360 range
	G6-60A	MAM0360W05V	
	G12-30A	MAM0360W12V	
	G24-15A	MAM0360W24V	
	G48-7.5A	MAM0360W48V	
Farnell GT6-20A			APS MAM0150 range
	GT6-20A	MAM0150W001	

Farnell Range	Farnell model number	APS equivalent model number	APS Range
Farnell NS055 range.			APS MAN0055 range
	NS055005	MAN0055W05V	
	NS055012	MAN0055W12V	
	NS055015	MAN0055W15V	
	NS055024	MAN0055W24V	
	NS055036	MAN0055W36V	
	NS055048	MAN0055W48V	
Farnell NS110 range.			APS MAN0110 range
	NS110005	MAN0110W05V	
	NS110012	MAN0110W12V	
	NS110015	MAN0110W15V	
	NS110024	MAN0110W24V	
	NS110036	MAN0110W36V	
	NS110048	MAN0110W48V	
Farnell NS140 range.			APS MAN0140 range
	NS140005	MAN0140W05V	
	NS140012	MAN0140W12V	
	NS140015	MAN0140W15V	
	NS140024	MAN0140W24V	
	NS140036	MAN0140W36V	
	NS140048	MAN0140W48V	
Farnell F2705, F2905 and 160 series rectifiers			CCR1500 range
	F2705X	CCR1500H54V	
	F2705SX	CCR1500H54V	
	F2905SXE	CCR1500H54V	
	160/54/28A	CCR1500H54V	
	F2705C	CCR1500H27V	
	F2705SC	CCR1500H27V	
	F2905SC	CCR1500H27V	
	160/27/50A	CCR1500H27V	
See http://www.160rectifier.com/ for further information. Other Voltage variants exist, please contact us for details.			

Advance -> APS Range and model compatibility cross reference chart

Advance Range or Gould Range	Advance/Gould model number	APS equivalent model number	APS Range
Advance/Gould Hiflex HI-750 / HI-1000 series.			COB Range
Hiflex-750	5085880	COB0800W001	
Hiflex-750	5085881	COB0800W002	
Hiflex-750	5085663	COB0800W003	
Hiflex-750	5085074	COB0800W003	
Hiflex-1000	5085823	COB0800W004	
Hiflex-750	5085837	COB0800W005	
Hiflex-750	5086804	COB0800W005	
Hiflex-750	50144-006-00-9	COB0800W005	
Hiflex-750	5085213	COB0800W006	
Hiflex-750	5085804	COB0800W007	
Hiflex-750	5085927	COB0800W008	
Hiflex-750	5085115	COB0800W009	
Hiflex-750	5085728	COB0800W010	
Hiflex-750	5085650	COB0800W011	
Hiflex-750	50144-003-00-6	COB0800W011	
Hiflex-750	605/7/11420/003	COB0800W011	
Hiflex-750	5085062	COB0800W013	
Hiflex-750	5085661	COB0800W013	
Hiflex-1000	5085764	COB0800W014	
Hiflex-750	50144-002-00-8	COB0800W015	
Hiflex-750	605/7/11420/002	COB0800W015	
Hiflex-1000	5085920	COB0800W016	
Hiflex-750	5085503	COB0800W017	
Hiflex-1000	5085736	COB0800W018	
Hiflex-750		COB0800W019	
Hiflex-750	5085993	COB0800W020	
Hiflex-750	5085996	COB0800W021	
Hiflex-750	5085997	COB0800W022	
Hiflex-750	5085998	COB0800W023	
Hiflex-750	5085813	COB0800W024	
Hiflex-750		COB0800W025	
Hiflex-1000	5086004	COB0800W026	
Hiflex-1000	50145-053-16-6	COB0800W026	
Hiflex-750	50144-039-00-0	COB0800W027	
Hiflex-750	50144-041-00-6	COB0800W028	
Hiflex-750	50144-037-00-4	COB0800W029	
Hiflex-750	50144-036-00-6	COB0800W030	
Hiflex-1000	50145-053-01-8	COB0800W031	
Hiflex-750	5085776	COB0800W032	
Hiflex-750	5085671	COB0800W033	

Advance Range or Gould Range	Advance/Gould model number	APS equivalent model number	APS Range
Hiflex-750	5085230	COB0800W033	
Hiflex-750	5085129	COB0800W034	
Hiflex-750	5085046	COB0800W035	
Hiflex-1000	50145-053-12-5	COB0800W036	
Hiflex-1000	605/7/11504/012	COB0800W036	
Hiflex-1000	50145-053-13-3	COB0800W037	
Hiflex-1000	605/7/11504/013	COB0800W037	
Hiflex-1000	50145-053-11-7	COB0800W038	
Hiflex-1000	605/7/11504/011	COB0800W038	
Hiflex-1000	50145-053-14-1	COB0800W039	
Hiflex-1000	605/7/11504/014	COB0800W039	
Hiflex-1000	50145-053-15-8	COB0800W040	
Hiflex-1000	605/7/11504/015	COB0800W040	
Hiflex-750	5085529	COB0800W041	
Hiflex-750	501481-019	COB0800W041	
Hiflex-750	5085733	COB0800W042	
Hiflex-750	5014841-009	COB0800W042	
Hiflex-750	50144-028-00-3	COB0800W043	
Hiflex-750	605/7/11420/028	COB0800W043	
Hiflex-750	50144-001-00-0	COB0800W044	
Hiflex-750	605/7/11420/001	COB0800W044	
Hiflex-750	5085646	COB0800W045	
Hiflex-750	5085950	COB0800W046	
Hiflex-750	5085257	COB0800W047	
Hiflex-1000	5086019	COB0800W048	

Advance Range or Gould Range	Advance/Gould model number	APS equivalent model number	APS Range
MMG 30W range			APS MAM0030 range
	MMG12-2.5	MAM0030W12V	
	MMG15-2	MAM0030W15V	
	MMG24-1.4	MAM0030W24V	
MG and MMG 60W range.			APS MAM0060 range
	MG5-10 and MMG5-10	MAM0060W05V	
	MMG12-5	MAM0060W12V	
	MMG15-4	MAM0060W15V	
	MG24-2.5 and MMG24-2.5	MAM0060W24V	
MG 120W range.			APS MAM0120 range
	MG5-20C	MAM0120W05V	
	MG12-10C	MAM0120W12V	
	MG15-8C	MAM0120W15V	
	MG24-5C	MAM0120W24V	
MG 240W range.			APS MAM0240 range
	MG5-40C	MAM0240W05V	
	MG12-20C	MAM0240W12V	
	MG24-10C	MAM0240W24V	
	MG48-5C	MAM0240W48V	
MG 360W range.			APS MAM0360 range
	MG5-60C	MAM0360W05V	
	MG12-30C	MAM0360W12V	
	MG24-15C	MAM0360W24V	
	MG48.7.5C	MAM0360W48V	
MG 500 watt range.			APS MAM0500 range
	MG24-21	MAM0500W24V	
	MG48-10	MAM0500W48V	
MGT5-20C power supply.			APS MAM0150 range
	MGT5-20C	MAM0150W001	
MGT400 power supply.			APS MAM0400 range
	MGT400	MAM0400W001	

Advance Range	Advance model number	APS equivalent model number	APS Range
Advance Powerflex PB350 power supply.			PIN Range
	PB350/412	PIN0350B412	
	PB350/416	PIN0350B416	
	PB350/474	PIN0350B474	
	PB350/476	PIN0350B476	
Advance Powerflex PD500 power supply.			PIN Range
	PD500/503	PIN0500B503	
Advance Powermag P1000 range.			POW1000 Range
	P1000/1	POW1000W001	
	P1000/2	POW1000W002	
	P1000/3	POW1000W003	
Advance Powerflex P350 / P500 series.			PYT range
	P350/763	PYT0450W001	
	P350/026 systems	PYT0450W002	
	5402642	PYT0450W002	
	5402644	PYT0450W002	
	A200B/3	PYT0450W003	
	P350/014	PYT0450W014	
	P350/017	PYT0450W017	
	P350/019	PYT0450W019	
	P350/021C system 5402102	PYT0450W021	
	P350/023	PYT0450W023	
	P350/024	PYT0450W024	
	P350/024	PYT0450W024A	
	P350/025	PYT0450W025	
	P350/026	PYT0450W026	
	P350/026 system 5402645	PYT0450W026A	
	P350/026	PYT0450W026B	
	P350/027	PYT0450W027	
	P350/027	PYT0450W027A	
	P350/028	PYT0450W028	
	P350/028	PYT0450W028A	
	P350/030	PYT0450W030	
	P350/031 system 5403105	PYT0450W031	
	P350/049 system 5404903	PYT0450W049	
	P350/053	PYT0450W053	
	P350/070FC	PYT0450W070	
	P350/070FC	PYT0450W071	

Advance Range	Advance model number	APS equivalent model number	APS Range
Powerflex cont ...	P350/070FC	PYT0450W071A	PYT cont ...
	P350/074	PYT0450W074	
	P350/079 system 5407948	PYT0450W079	
	P350/127	PYT0450W127	
	P350/130	PYT0450W130	
	P350/147	PYT0450W147	
	P350/165	PYT0450W165	
	P350/690	PYT0450W690	
	P350/702	PYT0450W702	
	P350/702	PYT0450W703	
	P350/702	PYT0450W703A	
	P350/715	PYT0450W715	
	P350/720	PYT0450W720	
	P350/748	PYT0450W748	
	P350/763	PYT0450W763	
	P500/018 system 5401853	PYT0550W018	
	P500/021	PYT0550W021	
	P500/024 system 5402495	PYT0550W024	
	P500/027	PYT0550W027	
	P500/028	PYT0550W028	
	P500/071	PYT0550W071	
	P500/142 system 5414299	PYT0550W142	
	P500/600	PYT0550W600	
	P500/725	PYT0550W725	
	P500/742	PYT0550W742	
	P500/833	PYT0550W833	
	P500/018	PYT0650W001	
	P500/025	PYT0650W025	
	P500/025	PYT0650W025A	
	P500/026 system 5402652	PYT0650W026	
	P500/028	PYT0650W028	
	P500/032	PYT0650W032	
	P500/166	PYT0650W166	
	P500/701	PYT0650W701	
	P500/717	PYT0650W717	
	P500/725	PYT0650W725	

Advance Range	Advance model number	APS equivalent model number	APS Range
Advance F2705, F2905 and 160 series rectifiers			CCR1500 range
	F2705X	CCR1500H54V	
	F2705SX	CCR1500H54V	
	F2905SXE	CCR1500H54V	
	160/54/28A	CCR1500H54V	
	F2705C	CCR1500H27V	
	F2705SC	CCR1500H27V	
	F2905SC	CCR1500H27V	
	160/27/50A	CCR1500H27V	
See http://www.160rectifier.com/ for further information. Other Voltage variants exist, please contact us for details.			

Other manufacturers -> APS model compatibility cross reference chart

Manufacturer	Model number	APS equivalent model number	APS Range
Emerson / Motorola / Force Computers			
	SYS68K / PWR32	SYS68KPWR32-APS	
Harmer and Simmons / Brentford / Invensys / Weir		CCR range	
	160/54/28A	CCR1500H54V	
	160/27/50A	CCR1500H27V	
Elba			
	LC150	LC150-APS	
Power One			
	HMF5-G4-E1-K-L	HMF5-G4-E1-K-L-APS	
Highland			
	PSU92	PSU92-APS	
Gresham			
	PT10C	PT10C-APS	
	PT1301E	PT1301E-APS	
Unipower			
	KP2GA2C-H	UKP0800W001	
	KP4D4D5A-H	UKP0800W002	
	KT2G2G2C33C	UKT2000H001	
Artesyn			
	N1204-1XXX	N1204-APS	
Please contact me regarding the suitability of the above solutions for your particular application.			

Replacement power supplies - Frequently Asked Questions

What exactly do you mean by 'form-fit-function identical replacements'?

They are literally designed to fit where the old supplies came from. They meet or exceed the specification of the original units. They are the same size, with the same fixing positions and electrical connections. There may be some very minor differences, but we can confirm everything with you before you order.

How can I be confident that they will work properly?

As the original design engineers for many of the Farnell / Gould / Advance units, we are best-placed to replicate the old PSU's. Uniquely, we also have legitimate access to much of the original Farnell / Gould / Advance design documentation, including test procedures, schematics and parts lists, thus ensuring product compatibility.

Do you offer any replacements for other manufacturers' obsolete PSUs?

We have also developed a limited range of replacement solutions for a limited number of other manufacturers to help our Customers. These are also listed in this guide.

If my problem supply is not listed, is there anything you can do to help?

We do also undertake custom or bespoke design and manufacture projects should your requirement not be available. Please ask me for further details.

What guarantees do you offer?

All of our manufactured products are covered by the minimum of a 3 year return to base warranty.

Are there any extended warranties available?

Extended life & warranty versions of many supplies are available for an additional charge.

Is APS a division of Farnell?

No, APS is an independent company, but as part of the original PSU design team at Farnell, Gould Advance and Advance Power in the 1960s to late 1990s, we were instrumental in the design and manufacture of what were reputed to be some of the most reliable power supplies in the world.

What quality accreditations does APS have?

Our work and systems are accredited to ISO9001 & ISO14001 standards.

What testing do the new PSUs undergo?

All our power supplies are subjected to a full burn in and parametric test prior to leaving the factory to ensure 100% product compliance

My PSU is not working right now; can you still offer a repair service?

APS have helped Farnell, Gould and Advance Customers with repairs and refurbishments of their PSU's since 2002. In fact, we have repaired over 17,000 power supplies from a myriad of manufacturers over the last 18 years, giving you access to unrivalled expertise in this area. This helps us to successfully repair, on budget, over 99% of the units sent to us by our Customers. This service is still available.

What if it is really urgent and I need a super- quick turnaround?

For those URGENT repairs, we offer a 24-48 hour turn around service, subject to parts availability. There is an additional charge for this service.

Please ask me for more details if you have a requirement that is not listed.

If your question is not listed here, please get in touch with me in any of the following ways...

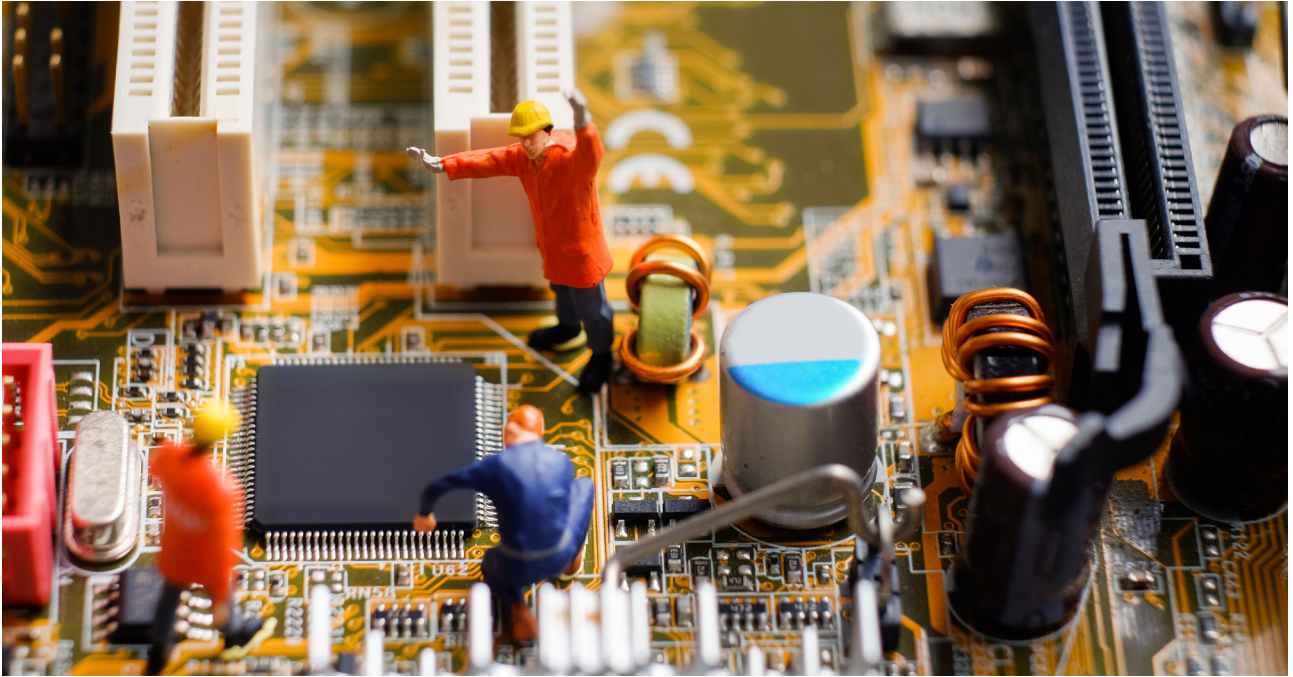
John Dyson

Advance Product Services Ltd
Unit 30, Freemans Way
Harrogate, HG3 1DH, UK.

Direct: +44 (0)1423 623 646
Mobile: +44 (0)7742 419 455
Office: +44 (0)1423 812 980

mailto: John.dyson@advanceproductservices.co.uk
<https://advanceproductservices.co.uk>





ADVANCE PRODUCT SERVICES LTD

About us

APS repair, refurbish or replace obsolete power supplies for mission critical applications worldwide. We can offer anything from an individual repair up to a bespoke design and manufacture solution.

Unlike general repair houses, APS help reliability-conscious Engineering and Procurement Professionals who have power supply reliability problems avoid costly outages and maximise uptime on critical equipment.

We have repaired over 17,000 power supplies from a myriad of manufacturers over the last 18 years, giving you access to unrivalled expertise in this area. This helps us to successfully repair, on budget, over 99% of the units sent to us by our Customers.

As the original design engineers for many of the Farnell / Advance units, we are best-placed to solve your problem and have an unrivalled technical understanding of what is required. Importantly, we also have legitimate access to much of the original Farnell / Advance design documentation, including test procedures, schematics and parts lists.

Our design background means this is all done with a quality mind-set and the diligence to maintain regulatory approvals and product safety. In the long term, you will benefit from reduced capital expenditure, minimised failures and a warm feeling from reduced obsolescence anxiety.

Where a repair or refurbishment is not an option, we can help you with a form, fit & function replacement or the bespoke design & manufacture of industrial PSU's and chargers all to ISO9001 and ISO14001 standards.

If you are stuck with a FARNELL or ADVANCE Power Supply problem you cannot solve, or are looking for obsolete datasheets, you can find lots of useful information here and on our website <https://advanceproductservices.co.uk>. Should you not be able to find what you are looking for, simply drop me an email at john.dyson@advanceproductservices.co.uk and I will look through the archives for you and do my best to help!